

CONSTRUCTION INFORMATION

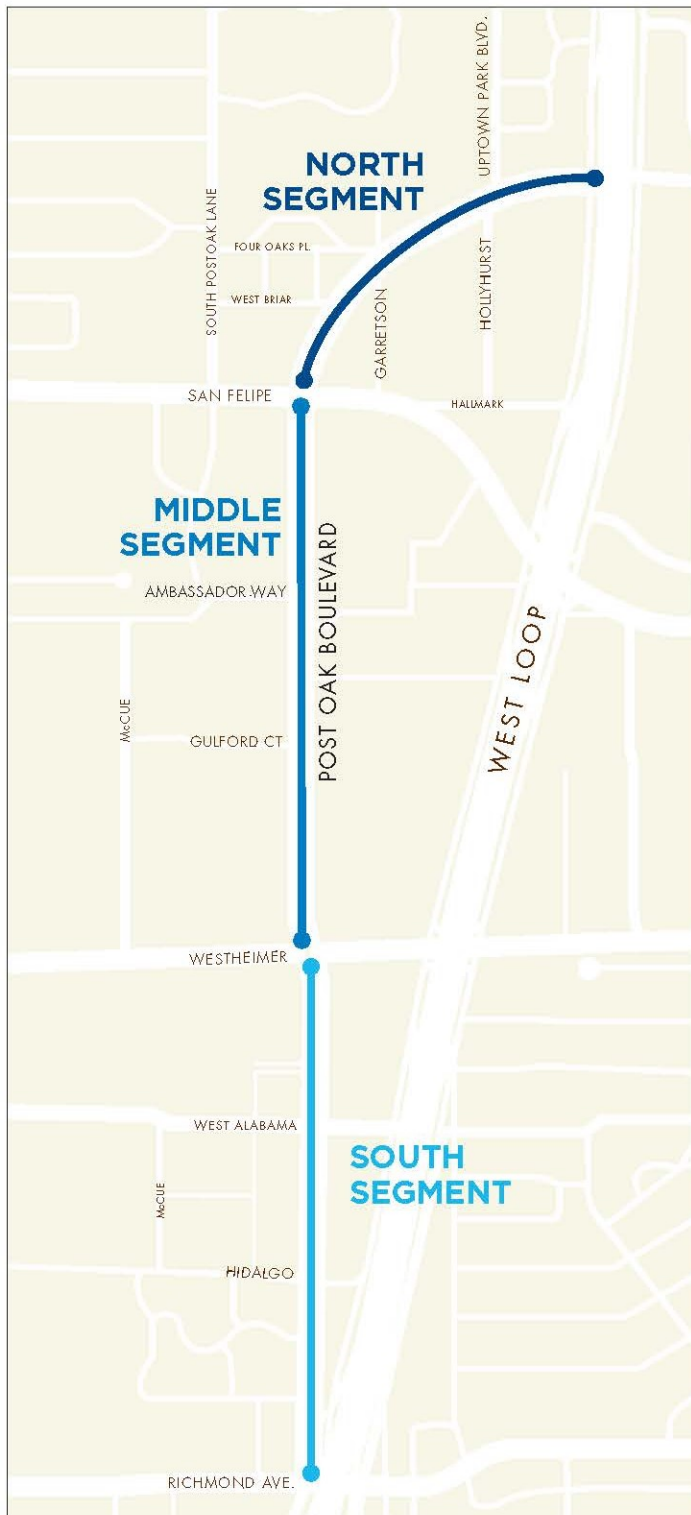
CONSTRUCTION APPROACH

Construction of the project began in June 2015 and will be managed in segments:

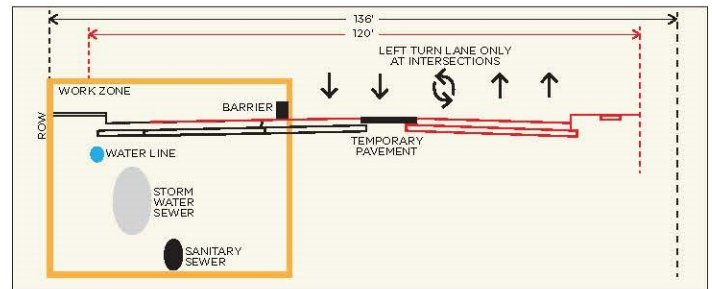
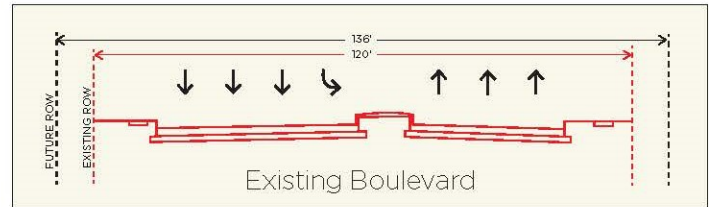
NORTH: West Loop to San Felipe

MIDDLE: San Felipe to Westheimer

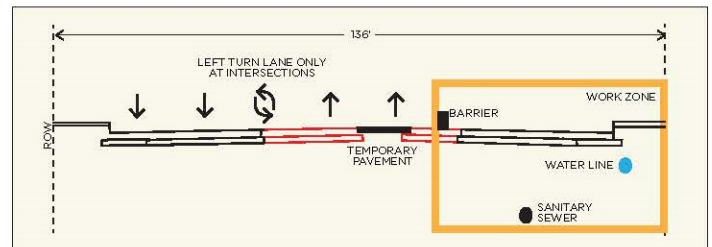
SOUTH: Westheimer to Richmond.



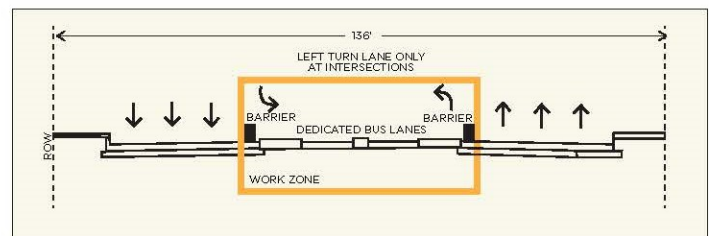
Construction in all three segments will follow a three-phased plan:



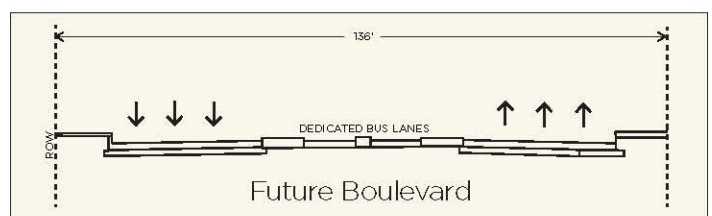
Phase 1, the first two lanes and curve on one end will undergo construction, preserving two lanes in each direction and a turn lane at intersections.



Phase 2, the two first lanes and curve on the opposite end undergo construction, preserving two lanes in each direction and a turn lane at intersections.



Phase 3, the central lanes undergo construction, preserving the three lanes (existing and newly constructed ones) in each direction & turn lane at intersections.



CONSTRUCTION INFORMATION

PRELIMINARY CONSTRUCTION SCHEDULE

	2015	2016	2017	2018
UTILITY CAPACITY EXPANSION				
SANITARY SEWER CONSTRUCTION	■			
OTHER UTILITY CONSTRUCTION		■		

NORTH SEGMENT				
SOUTHBOUND		■		
NORTHBOUND PARTIAL			■	
MEDIAN				■

SOUTH SEGMENT				
NORTHBOUND I (PARTIAL)		■		
SOUTHBOUND			■	
NORTHBOUND II (COMPLETION)				■
MEDIAN				■

MIDDLE SEGMENT				
SOUTHBOUND			■	
NORTHBOUND				■
MEDIAN				■

TRAFFIC CONTROL DURING CONSTRUCTION

Throughout construction, the primary objectives are to ensure safe and efficient traffic operations and to provide access to buildings and businesses. With these objectives in mind:

- Driveway access to properties maintained at all times
- All traffic lanes open in non-active construction segments
- Two traffic lanes maintained in each direction in active construction segments
- All turning movements at signalized intersections maintained during peak periods
- No construction in high-traffic areas during holiday season and special events